

HOW TO MEASURE TO GARMENT DIMENSIONS

River's End measurements refer to garment dimensions, not body size.

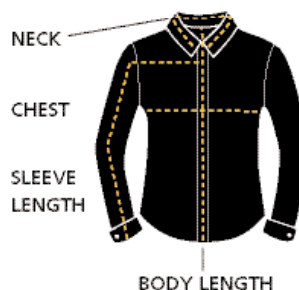
Take a shirt that fits you well and measure the following areas:

Neck: Use a piece of string to measure the fullest part of the collar.

Chest/Bust: Measure 1" below the armhole.

Sleeve Length: Measure from center back at the base of the collar to the shoulder, and then from the shoulder seam to the end of the cuff.

Body Length: Measure from the base of the collar to the bottom hem.



River's End styles, see pages 106–154

MEN'S	S	M	L	XL	2XL	3XL	4XL	5XL
WOVENS								
Body length from center back	30 ¹ / ₄ "	32 ¹ / ₄ "	33 ¹ / ₄ "	34 ¹ / ₄ "	34 ³ / ₄ "	35 ¹ / ₄ "	35 ¹ / ₂ "	36 ¹ / ₄ "
Body length from center back Tall			36"	37"	37 ¹ / ₂ "			
Chest width 1" below armhole	22 ¹ / ₂ "	24"	25 ³ / ₄ "	27 ¹ / ₂ "	29 ¹ / ₄ "	31 ¹ / ₄ "	32 ³ / ₄ "	34 ³ / ₄ "
Neck	14 ¹ / ₂ "	15 ¹ / ₂ "	16 ¹ / ₂ "	17 ¹ / ₂ "	18 ¹ / ₂ "	19 ¹ / ₂ "	20 ¹ / ₂ "	21 ¹ / ₄ "
Sleeve length center back to cuff	33 ¹ / ₄ "	34 ¹ / ₄ "	35 ¹ / ₄ "	36 ¹ / ₄ "	37 ¹ / ₄ "	38"	38 ³ / ₄ "	39 ¹ / ₂ "
Sleeve length center back to cuff Tall			36 ¹ / ₄ "	37 ¹ / ₄ "	38 ¹ / ₄ "			
POLOS								
Body length from center back	29 ¹ / ₂ "	30 ¹ / ₂ "	31 ¹ / ₂ "	32 ¹ / ₂ "	33 ¹ / ₂ "	34 ¹ / ₂ "	36 ¹ / ₂ "	37 ¹ / ₂ "
Chest width 1" below armhole	21 ¹ / ₂ "	23 ¹ / ₄ "	24 ³ / ₄ "	26 ¹ / ₄ "	27 ³ / ₄ "	28 ¹ / ₂ "	30 ¹ / ₂ "	31 ¹ / ₂ "
OUTERWEAR								
Body length from center back	29"	30"	31"	32 ¹ / ₂ "	34"	35 ¹ / ₂ "		
Body length from center back Tall			32"	33"	34 ¹ / ₂ "	36"		
Chest width 1" below armhole	21"	22"	23 ¹ / ₂ "	25"	26 ¹ / ₂ "	28"		
Sleeve length center back to cuff	35 ¹ / ₂ "	36"	36 ³ / ₄ "	37 ¹ / ₂ "	38 ¹ / ₄ "	39"	39 ³ / ₄ "	40 ¹ / ₂ "
Sleeve length center back to cuff Tall			37 ³ / ₄ "	38 ¹ / ₂ "	39 ¹ / ₄ "			
LADIES'								
	S (6-8)	M (10-12)	L (14-16)	XL (18-20)	2XL (22-24)	3XL (26-28)		
WOVENS								
Body length from center back	27 ¹ / ₄ "	27 ³ / ₄ "	28 ³ / ₄ "	29"	29 ³ / ₄ "	30"		
Chest width 1" below armhole	22"	23"	24 ³ / ₄ "	25 ³ / ₄ "	26 ¹ / ₂ "	29"		
Sleeve length	31"	31 ¹ / ₂ "	31 ³ / ₈ "	32 ¹ / ₂ "	33"	33 ¹ / ₂ "		
POLOS								
Body length from center back	25 ¹ / ₄ "	26 ¹ / ₄ "	27 ¹ / ₄ "	28 ¹ / ₄ "	29 ¹ / ₄ "	30"		
Chest width 1" below armhole	19 ¹ / ₄ "	21"	22 ³ / ₄ "	24 ¹ / ₂ "	26 ¹ / ₂ "	29"		
OUTERWEAR								
Body length from center back	24 ¹ / ₂ "	25"	25 ¹ / ₂ "	26"	26 ¹ / ₂ "	27"		
Chest width 1" below armhole	20 ³ / ₄ "	21 ³ / ₄ "	22 ³ / ₄ "	23 ³ / ₄ "	24 ³ / ₄ "	25 ³ / ₄ "		
Sleeve length center back to cuff	31 ³ / ₄ "	32 ¹ / ₄ "	33 ¹ / ₄ "	33 ³ / ₄ "	34 ³ / ₄ "	35 ¹ / ₂ "		
Her Perspective Collection								
	S (4-6)	M (8-10)	L (12-14)	XL (16-18)	2XL (20-22)	3XL (24-26)		
Center back length	23"	23 ³ / ₄ "	24 ³ / ₄ "	24 ³ / ₄ "	25 ³ / ₄ "	26 ³ / ₄ "		
Chest width 1" below armhole	18 ¹ / ₄ "	20"	21 ¹ / ₄ "	22 ³ / ₄ "	24 ¹ / ₄ "	25 ¹ / ₂ "		

Measurements may vary by style.

All sizes represented in these size charts are approximations. For accurate sizing on specific styles, please call a representative.